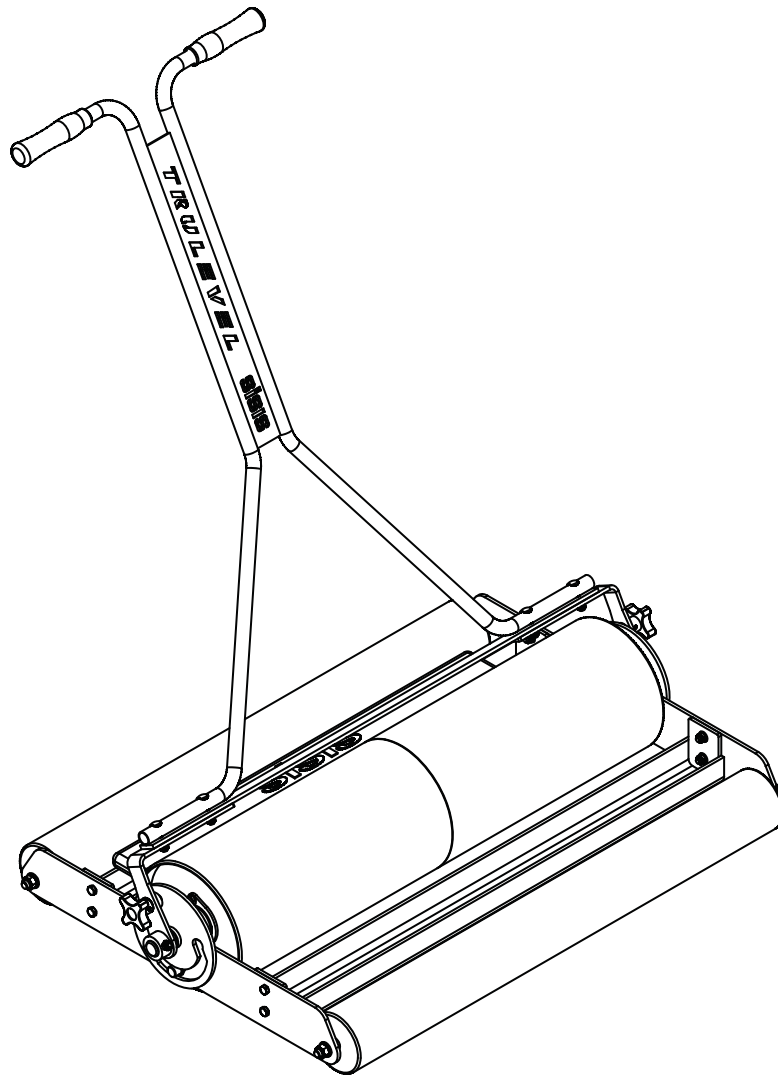


sisis®

TRULEVEL ROLLER INSTRUCTION MANUAL



SISIS, Ashbourne Road, Kirk Langley, Derbyshire, DE6 4NJ, England.

Tel: +44 (0) 1332 824 777 | Fax: +44 (0) 1332 824 525 | Email: info@sisis.com | www.sisis.com

A division of Howardson Ltd. - a proudly British company
Company reg no 641526 - Vat No GB 345 9918 12

SP20010_REV_0
03/12



NOTE

MAKE A NOTE OF THE SERIAL NUMBERS OF YOUR MACHINE & ENGINE AND ALWAYS QUOTE THEM IN ANY COMMUNICATION WITH PERSONNEL AT DENNIS.

MACHINE SERIAL NUMBER

Introduction

The **SISIS Trulevel Roller** is a 120Kg Bowling Green Roller ideal for use during the playing season.

It is advisable to read the instructions carefully. Proper care and attention will enable the machine to give a continuous, satisfactory, and reliable service.

In the case of any difficulty, or if further information or advice is required, our Service Department is always at your call. In the interests of speed and accuracy of information please quote the serial number of the machine when making enquiries.

For the machine, this is to be found on a plate attached to the side frame. We suggest you write the numbers above.

Contents

	Page
Serial Numbers.....	2
Introduction.....	2
Assembly Instructions.....	3
Operating Instructions	3
Storage	3
Parts Listings.....	4
Notes	5

Fix the Handle to the Roller by means of the Handle U-Clip and Bolts to the each end of the main Roller Spindle.

Operating Instructions



CAUTION

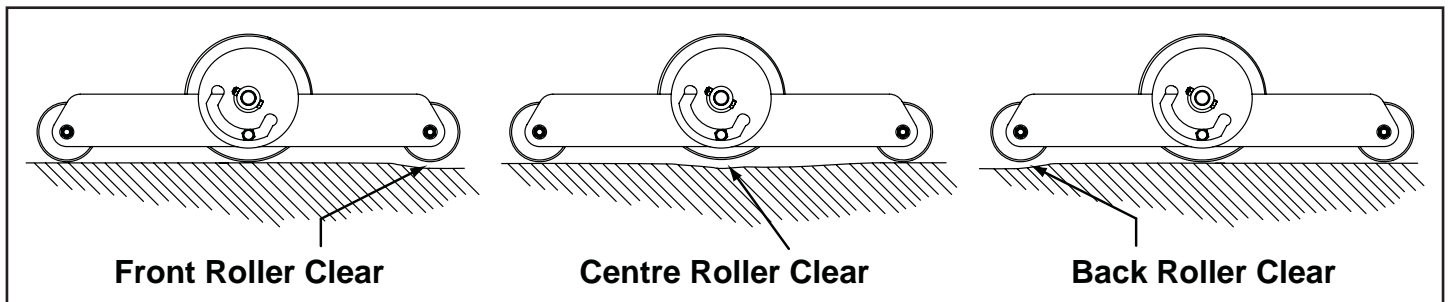
PLEASE READ THESE OPERATING INSTRUCTIONS CAREFULLY BEFORE COMMENCING WORK.

We want you to obtain the best performance from this machine. If you have any difficulty in carrying out the following instructions please contact SISIS direct or your local SISIS Territory Manager or SISIS Dealer.

OPERATING PRINCIPAL

During the playing season and when the Trulevel effect is required, the 2 hand screws should be kept in position through the handle sides and the holes in each of the 2 cams. The handle should also be used in the normal manner.

The weight of the roller is now evenly distributed in all drums. The levelling effect of the Trulevel is achieved by the over riding action on slight hollows. As each cylinder reaches a hollow, it is suspended by the remaining cylinders. Thus the level surface is firmly rolled, whilst low areas are left.



For maximum weight and without using the 2 small rollers (ie eliminating the Trulevel principle), screw the 2 hand screws through the sides of the handle and through the holes in the side cams - press down the handle as far as it will go - this raises the small rollers. With the handle in this position remove the 2 hand screws and use in normal manner. This now leaves the small rollers in the raised position and the weight is now concentrated on the main split roller.

The weight can be increased, if required by adding cast weights or ballast such as bricks, placed in the 2 channels.

Push or pull the machines as preferred.

When set for summer use - depress the handle to its full extent, this raises the small rollers and the machine can be slewed on the main split rollers.

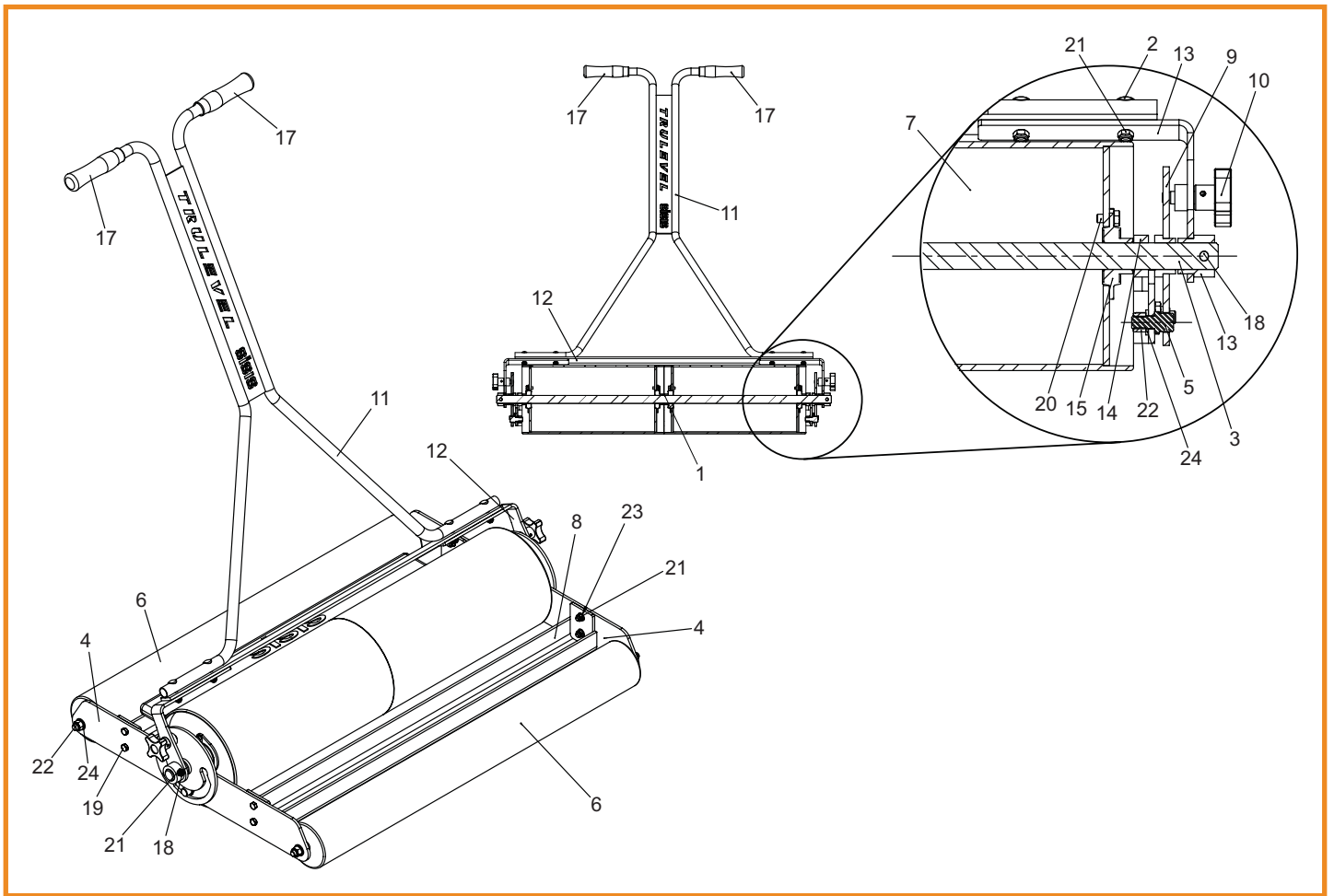
When set for spring use slew the machine on the main split rollers.

OVERHAUL

The machine may be taken to pieces in the winter if required and easily reassembled.

Storage

If at all possible keep under cover: even a waterproof sheet is worth while. Place the roller on 2 pieces of wood.



1.01

Trulevel Roller

Item No.	Part No.	Description	Quantity
1	228092	Shim ID 25.8 x 1 THK	1
2	228093	Bolt Saddle M8 x 43	4
3	400695	Main Roller Shaft	1
4	400696	Side Plate Trulevel	2
5	400697	Pin Trulevel	2
6	400698	Roller Trulevel	2
7	400701	Drum Assy	2
8	400706	Tie Bar Assy	2
9	400707	Cam Assy	2
10	400708	Locking Screw Assy	2
11	400710	Handle Assy	1
12	400711	Handle Brace	1
13	400712	Handle Lower Assy	2
14	400717	Roller Spacer	2
15	D1588	Bearing BPFL5-16	4
16	D2702	Ballast Weight	1
17	J20107	Handle Grip Rubber	2
18	SP01022	Hex Set Screw M8 x 50	2
19	SP01045	Hex Set Screw M8 x 25	8
20	SP01076	Hex Set Screw M8 x 16	8
21	SP02006	Nut M8 Nyloc (T)	14
22	SP02010	Nut M12 Nyloc (T)	6
23	SP03008	Washer M8 Form A	8
24	SP03012	Washer M12 Form A	6

sisis®

SISIS, Ashbourne Road, Kirk Langley, Derbyshire, DE6 4NJ, England.

Tel: +44 (0) 1332 824 777 | Fax: +44 (0) 1332 824 525 | Email: info@sisis.com | www.sisis.com

A division of Howardson Ltd. - a proudly British company
Company reg no 641526 - Vat No GB 345 9918 12